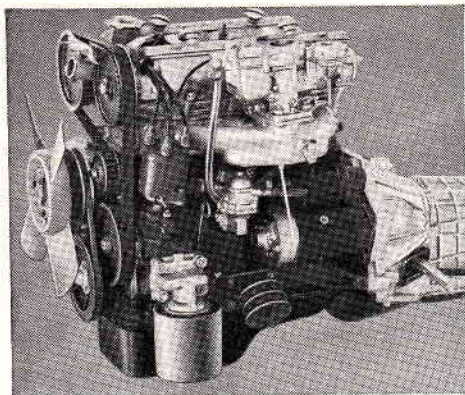


*Power with only a whisper*



# The new Fiat twin-cam

From Fiat: a new whisper-quiet twin-cam power unit.

It gives an effortless 90 bhp—and more, for the sportsman. It is new, but fully proved.

This engine sweeps smoothly up to 100 mph, and is just as smooth in dense traffic. Gives real power, from 2000 to 6800 rpm, with eager, flexible response from rest to maximum speed. This performance lets you potter through the lanes in top—pound untiringly along the motorways.

A rubber-toothed belt drive to the twin camshafts ensures silent-running power.

The camshafts stay constantly in tune, the tappets are easily accessible for adjustment, giving maximum performance with the minimum of maintenance.

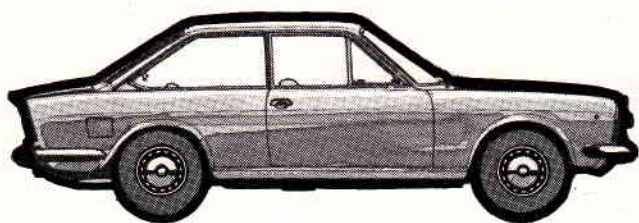
And a single, two-stage carburetter meets the power demand with a modest thirst.

The Fiat twin-cam engines are lively, rugged, reliable and economical.

Two Fiats have the new twin-cam :

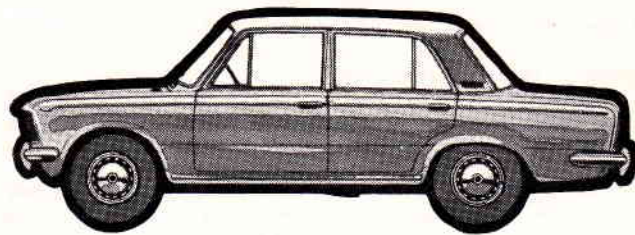
The 124 Coupé. The 125 Saloon.

Two quite different cars, but equally impressive. Try them both.



**The Fiat 124 Coupé** Twin-cam engineering giving 96 bhp from 1438 cc. A surge of acceleration from 0-50 mph in only 7.7 seconds and a maximum speed of over 105 mph. Power—smooth power—throughout the rev range. A balanced 5-bearing crankshaft. The gearbox a crisp delight. Functionally elegant, full four-seater styling designed for maximum safety and superb road-holding. Impact resistant coachwork with full interior padding and anti-burst doorlocks. Advanced ventilation and heating systems. Lavish instrumentation. No greasing points. Radial-ply tyres. Servo-assisted disc brakes at front and rear. **£1391.0.7.**

**FIAT**  
**124**  
**COUPÉ**



**The Fiat 125 Saloon** Twin-cam design for a fabulous family saloon. 90 bhp from 1608 cc. Acceleration from 0-50 mph in 8.2 seconds, with a maximum speed of over 100 mph. Known as 'The Sprinter in a Savile Row Suit' it provides luxury for five, and with complete visibility for everyone. A body with built-in safety, plus impact padding throughout and burst-proof doorlocks. Flow-through heating and fresh-air ventilation. Full, clear-view instrumentation. Wide section tyres for comfort and safety. Servo-assisted disc brakes at front and rear. No greasing points. Minimum-cost maintenance. **£1081.16.2.**

**FIAT**  
**125**

*Prices quoted are recommended retail prices, inclusive of purchase tax.*

**Take a test drive. Service and spares are provided by a nationwide network of more than 500 selected dealers.**

FIAT (ENGLAND) LIMITED  
NORTHDALE HOUSE • NORTH CIRCULAR ROAD • LONDON NW10 • 01-965 1951